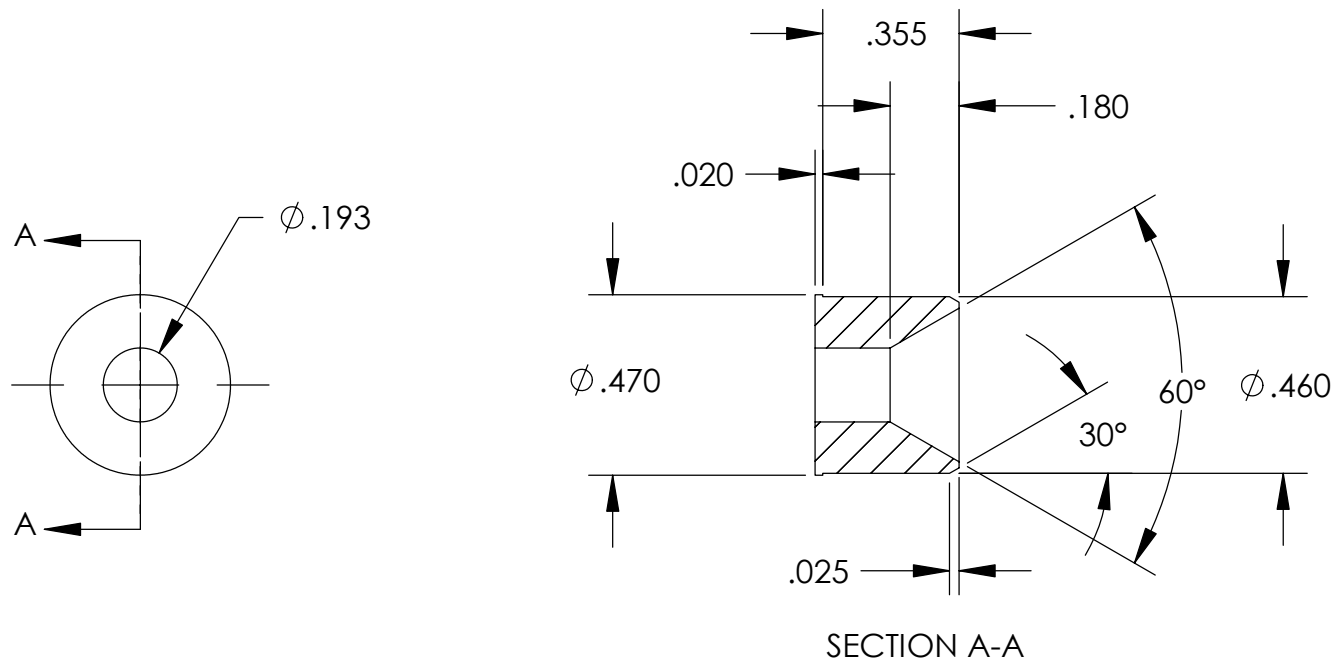


REVISIONS		
REV	DESCRIPTION	DATE
B	CHANGED CONICAL DIMENSIONS	2/11/2004



# NOTES:

1. .460 DIAMETER TO FIT ID OF P/N -107.
2. .193 DIA TO FIT OVER 3/16" TUBING.
3. MAKE FROM 1/2" X .188" W.T. TUBE.

UNLESS OTHERWISE SPECIFIED:							<div>High Precision Devices</div> <div>1668 Valtec Lane, Suite C, Boulder, Colorado 80301</div> <div>Phone: (303) 447-2558 Fax: (303) 447-2548 Web Site: www.hpd-online.com</div> <div>TITLE: p02101-109 weld adapter, precool</div> <div>CONFIGURATION: 00-Default</div>					
DIMENSIONS ARE IN INCHES DECIMAL TOLERANCES: .X ±.030 .XX ±.015 .XXX ±.005												
ANGULAR TOL: ± 1° SURFACE ROUGHNESS:63/												
INTERNAL AND EXTERNAL SURFACE INTERSECTIONS SHALL BE UNIFORMLY FINISHED WITH CHAMFER .005/.010 X 45° OR RADIUS .005/.010. CHAMFER ALL THREADED HOLES 110° OF MAJOR DIAMETER X 45°												
MATERIAL: 304 SST							SIZE	QTY PER ASSM: 1	SCALE: 2:1	SHEET 1 OF 1		REV
FINISH: NONE							A	DATE: 5/20/2004	DRAWN BY: C. Danaher		B	